



SMART CAMPUS SYSTEM

MILITARY ACADEMY

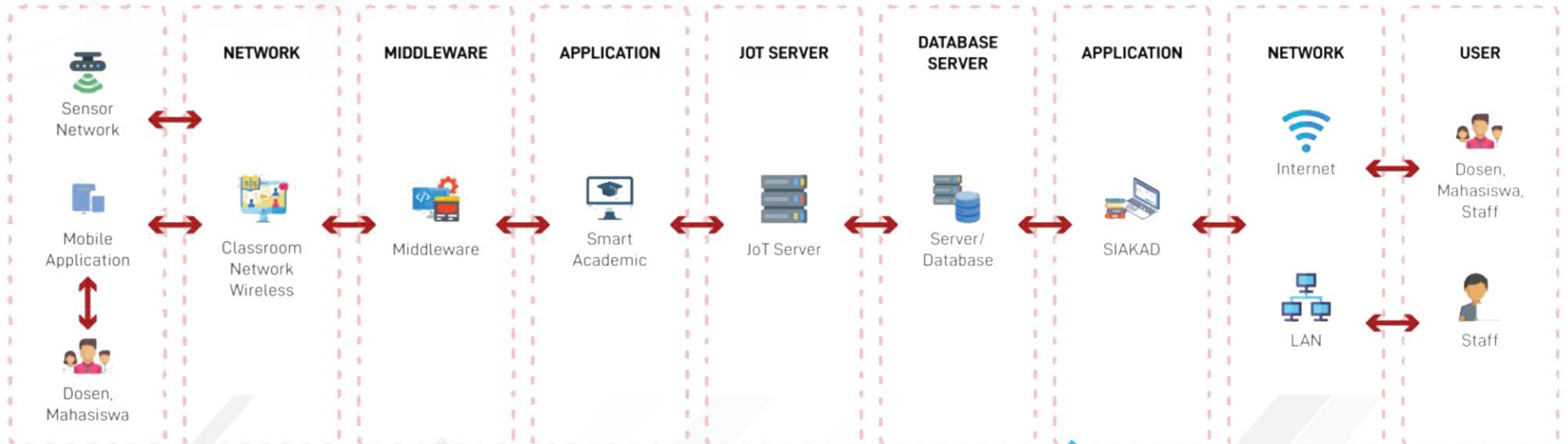


SMART CAMPUS SYSTEM

MILITARY ACADEMY

A Smart Campus System tailored for a military academy incorporates specific features and functionalities to address the unique requirements and challenges faced by such institutions. Military academies have distinct needs related to training, security, and discipline.

A Smart Campus System for a military academy aims to enhance the efficiency of training, improve security measures, and streamline administrative processes unique to military education and discipline. It plays a crucial role in preparing future military leaders by leveraging advanced technologies to create a smart and secure learning environment.



ACADEMIC INFORMATION SYSTEM

An Academy Information System application, often referred to as an Academic Management System or School Information System, is a software solution designed to streamline and enhance the management and administration of educational institutions.

This type of application caters to the specific needs of schools, colleges, universities, or any other academic organizations. The primary goal is to digitize and automate various administrative processes, making them more efficient, accurate, and accessible.

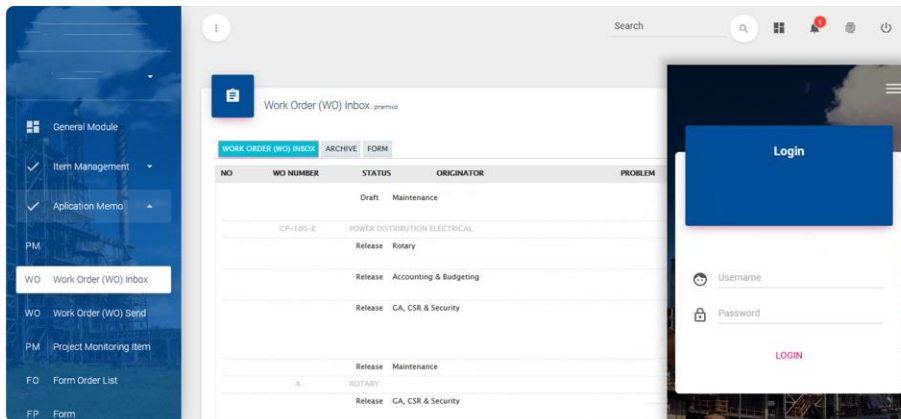


Front Office Module

The Front Office, Student, and Teachers Modules are integral components of an Academy Information System or School Management System. These modules are designed to streamline administrative processes, enhance communication, and provide a user-friendly interface for both staff and stakeholders.

Administration Module

The Administration Module within an Academy Information System or School Management System is a crucial component that focuses on the overall management and coordination of administrative tasks within an educational institution. This module is designed to streamline and automate various administrative processes, making them more efficient, organized, and accessible.



SMART CLASSROOM MONITORING SYSTEM

A Smart Classroom Monitoring System is designed to enhance the teaching and learning experience within a classroom by integrating technology to monitor and manage various aspects of the learning environment. This system typically involves the use of hardware and software solutions to facilitate efficient teaching, improve student engagement, and provide tools for educators to monitor and assess classroom activities.

Lecture Video Documentation Module

The Lecture Video Documentation Module is a component of an educational technology system designed to capture, manage, and distribute recorded lecture videos. This module is particularly valuable in higher education institutions, online courses, and blended learning environments where recorded lectures provide flexibility for students to access educational content at their own pace.

Class Activities Monitoring Module

The Class Activities Monitoring Module is a component of educational technology systems designed to track, analyze, and manage various activities within a classroom setting. This module is particularly valuable for educators, administrators, and institutions seeking to enhance teaching effectiveness, student engagement, and overall classroom management.



Student in the Class Performance Monitoring Module

The Student in the Class Performance Monitoring Module is a component of educational technology systems designed to track and assess individual student performance within a classroom setting. This module provides tools for educators and administrators to monitor students' academic progress, participation, and engagement during class activities.

SOFTWARE LEARNING MANAGEMENT SYSTEM

A Learning Management System (LMS) is software designed to streamline the administration, delivery, and management of educational courses or training programs. It serves as a centralized platform for educators, administrators, and learners to access and interact with educational content.

Student & Teachers interaction Module

The Student and Teachers Interaction Module is a component within an educational technology system designed to facilitate communication, collaboration, and engagement between students and teachers. This module aims to create a seamless and interactive environment that enhances the teaching and learning experience.

E-Test Module

An e-Test Module, also known as an electronic testing or online assessment module, is a component within an educational technology system designed to facilitate the creation, administration, and evaluation of tests, quizzes, and assessments in a digital format. This module leverages technology to streamline the assessment process, making it more efficient, flexible, and accessible.



Anti-Plagiarism

Plagiarism refers to the unauthorized use or reproduction of someone else's work or ideas without proper attribution. The Anti-Plagiarism Module utilizes various tools and techniques to identify instances of plagiarism and ensure academic integrity.

Administration Module

The Administration Module within an educational technology system or learning management system (LMS) is a crucial component that focuses on the overall management and coordination of administrative tasks within an educational institution. This module is designed to streamline and automate various administrative processes, making them more efficient, organized, and accessible.

PORTAL LICENSE

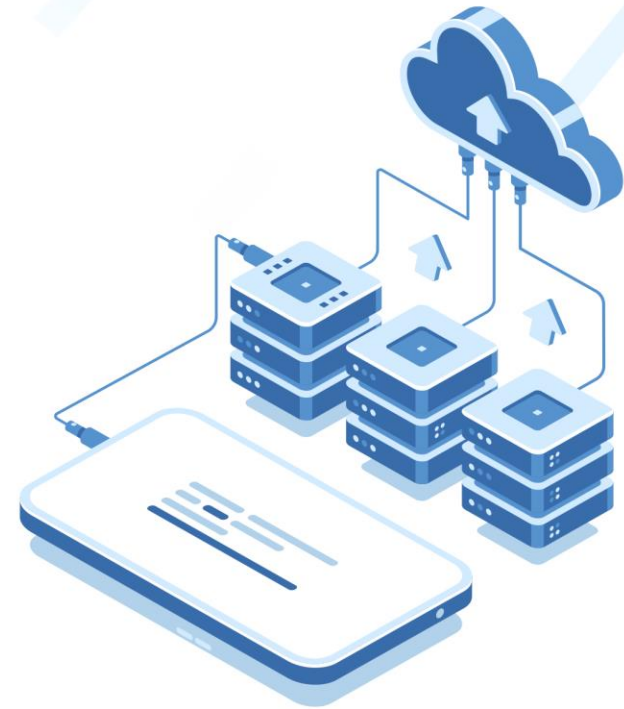


A portal license typically refers to a licensing agreement that grants an entity, such as an organization or institution, the right to use and access a specific portal or web-based platform. This type of license is commonly associated with software solutions, particularly those that provide a centralized online space for users to access various features, tools, and information.

When considering a portal license, organizations should carefully review the terms and conditions outlined in the licensing agreement to ensure that it aligns with their needs, usage requirements, and compliance standards.

CLOUD DATA SYSTEM

A cloud data system refers to a system or architecture where data storage, processing, and management are hosted and managed in cloud environments. Cloud data systems leverage the infrastructure and services provided by cloud computing providers to store and process data.



This approach offers scalability, flexibility, and accessibility, allowing organizations to efficiently manage their data without the need for extensive on-premises infrastructure.

Cloud data systems often use object storage services provided by cloud providers. Data is stored in scalable and distributed object storage systems that can accommodate large volumes of unstructured data.

MOBILE PRESENCE SYSTEM

A mobile presence system refers to a technology or solution that allows individuals to mark their attendance using mobile devices such as smartphones or tablets. This system is commonly used in educational institutions, businesses, and organizations to streamline attendance tracking processes.

A dedicated mobile app is typically provided for users to mark their attendance. This app can be installed on smartphones or tablets, and it often supports multiple platforms (iOS, Android). Mobile attendance systems often integrate with larger information systems used by educational institutions or businesses, allowing seamless data flow between attendance records and central databases.



Client Side System (Mobile Apps) Module

Incorporates mechanisms for collecting user feedback and analytics data to understand user behavior, preferences, and areas for improvement. This information is valuable for ongoing enhancements.

Server Side Presence System Module

The module often integrates with a user directory or authentication system to obtain information about users and their authentication status. This integration ensures accurate tracking of user presence.

SOFTWARE ENTERPRISE CONTENT MANAGEMENT SYSTEM - ENTERPRISE LICENSE



Enterprise Content Management (ECM) refers to the strategies, processes, and technologies used by organizations to capture, manage, store, preserve, and deliver content and documents related to their organizational processes. An Enterprise Content Management System with an Enterprise License is a comprehensive software solution designed for large-scale deployment across an entire organization.

Provides a centralized repository for storing and organizing digital documents. Users can categorize, tag, and version-control documents to ensure efficient management and retrieval.

Implements workflow automation to streamline business processes. This involves the automation of document-centric tasks, approvals, and routing, reducing manual intervention and improving efficiency.



STREAMING SERVER SYSTEM



Enables on-demand streaming, allowing users to access pre-recorded content at their convenience. Content is streamed as it is requested, eliminating the need for users to download the entire file before playback.

Compatible with various streaming clients or players across different devices and platforms, including web browsers, mobile apps, smart TVs, and set-top boxes.



A Streaming Server System is a technology infrastructure designed to deliver multimedia content, such as audio and video, over a network in real-time or on-demand. This system enables users to access and consume content without having to download the entire file beforehand. Streaming servers play a crucial role in various applications, including online video platforms, live broadcasting, online gaming, and more.

A well-designed Streaming Server System is crucial for delivering a reliable, high-quality streaming experience to end-users. Whether for entertainment, education, or business purposes, streaming servers play a vital role in the modern digital landscape.



SMART CAMPUS SYSTEM

MILITARY ACADEMY



BERKHAN SYSTEMS

INTERNATIONAL PTE LTD - SINGAPORE

▪ Systems for all, all for systems ▪

Berkhan Systems International. PTE. LTD.

1 Coleman Street #10-06,
The Adelphi, Singapore 179803
+65 9654 9624