



ACCORTO TEHNO

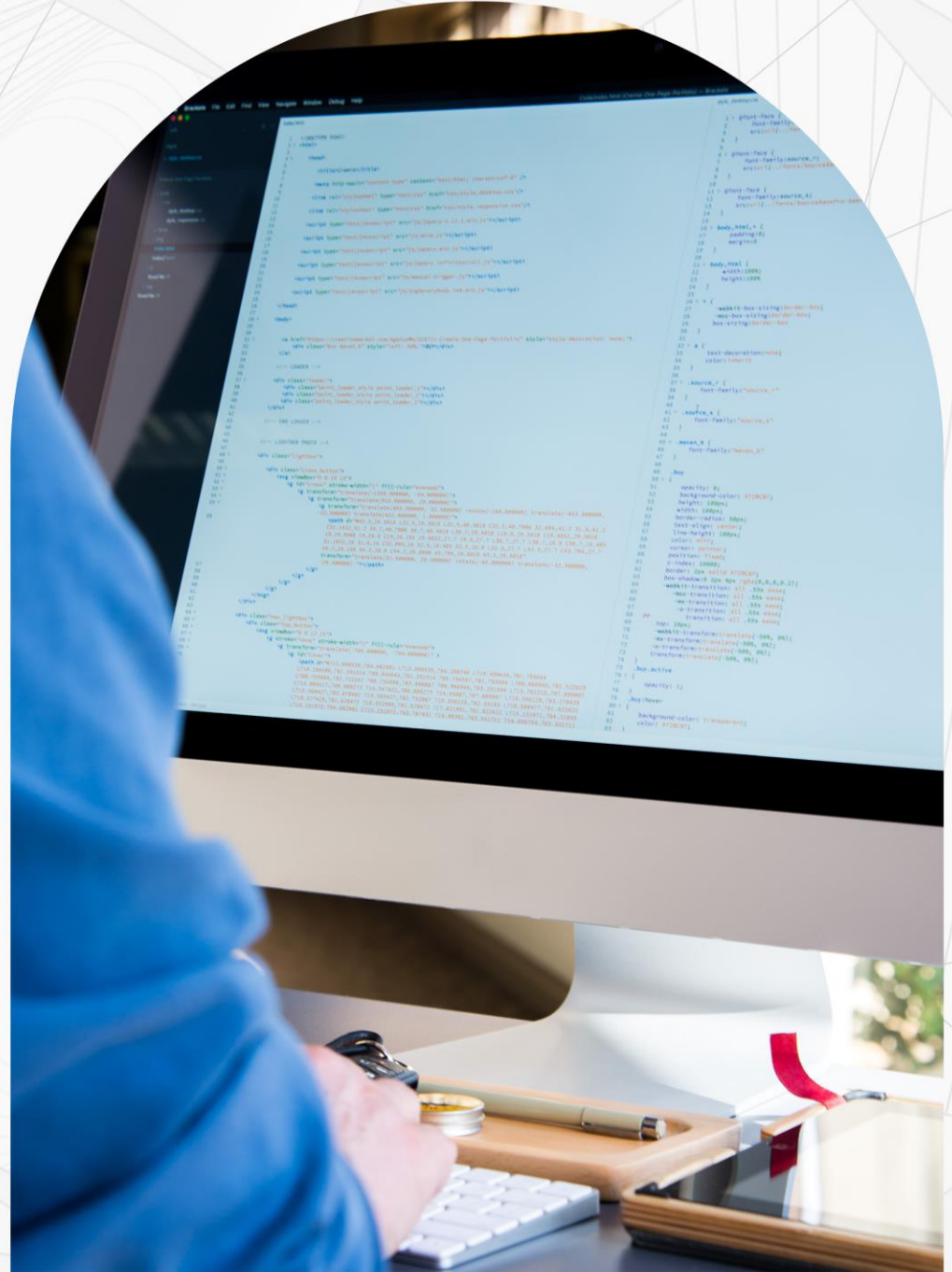


ACCORTO TECHNO

ACCORTO TECHNO

These systems examine vast amounts of data produced by the campus ecosystem by using big data analytics. Information about student performance, attendance, facility usage, and other things can be included in this. Tools for data analytics can be used to find trends, patterns, and insights that can guide strategic choices.

These resources support decision-making on the distribution and administration of on-campus real estate. This include making the best use of the facilities, overseeing maintenance duties, and scheduling classes optimally.



An all-inclusive system that blends surveillance and command and control features is called an integrated command and surveillance system. These systems are frequently made to be used in a variety of settings, including as the military, law enforcement, border security, and defense of vital infrastructure.

Data Modeling System Module

A module of a database management system or bigger software application that makes data modeling easier to create, manage, and visualize is called a data modeling system module. The process of designing a database must include data modeling, and this module offers the tools and capabilities needed to specify the constraints, relationships, and structure of a database.

Module for Statistical and Trend Analysis

An information system or software program that focuses on analyzing numerical data to find patterns, trends, and statistical insights is called a Module for Statistical and Trend Analysis. Numerous disciplines, including as business intelligence, data analytics, and research applications, frequently use this module.

Module for Integrating Charts

This module is frequently found in many different applications, such as dashboard solutions, reporting systems, data visualization platforms, and business intelligence tools.

Visual Detection Integration Module

Typically, visual detection entails the identification and analysis of visual data using cameras, sensors, and imaging technology. This integration module might be a component of a larger system made for computer vision, automation, security, or surveillance applications.

Module for Tables and Reporting

This module is frequently present in several software categories, including as enterprise resource planning (ERP) systems, database management systems, and business intelligence tools.

**COMMAND AND
SURVEILLANCE
INTEGRATED SYSTEM**

An intelligent and technologically sophisticated platform called a Smart Learning Management System (LMS) is made to make it easier to manage, deliver, and track educational content in a tailored and effective way. Smart learning management systems (LMS) make use of a range of technology, data analytics, and artificial intelligence to improve student outcomes, offer tailored material, and expedite administrative procedures.



Module Interaction Students and Teachers

This module is essential for creating a safe and encouraging learning environment, facilitating in-person interactions, and improving the quality of education as a whole.

Online Testing Module (e-Test)

For educational institutions and organizations who wish to administer exams, quizzes, and tests online, this module is quite helpful.

Administration Module

Administrators may effectively administer the entire system, including user accounts, course offerings, data administration, and reporting, with the use of this module's tools and features.

SMART LEARNING MANAGEMENT SYSTEM



An Educational Information System (EIS) application is a type of software designed to manage and streamline various aspects of educational establishments, ranging from scholastic protocols to administrative responsibilities. These applications leverage technology to enhance learning settings' efficiency, collaboration, and data management.

The use of educational information system applications helps educational institutions eventually enhance the whole learning experience for students by optimizing processes, encouraging improved communication, and enabling data-driven decision-making.

Administrative Module

An essential part of an Educational Information System (EIS) or School Management System that concentrates on overseeing the administrative duties and activities of a learning establishment is the Administrative Module. With the help of this module, a variety of administrative tasks can be automated and streamlined to increase productivity, accuracy, and centralized control.

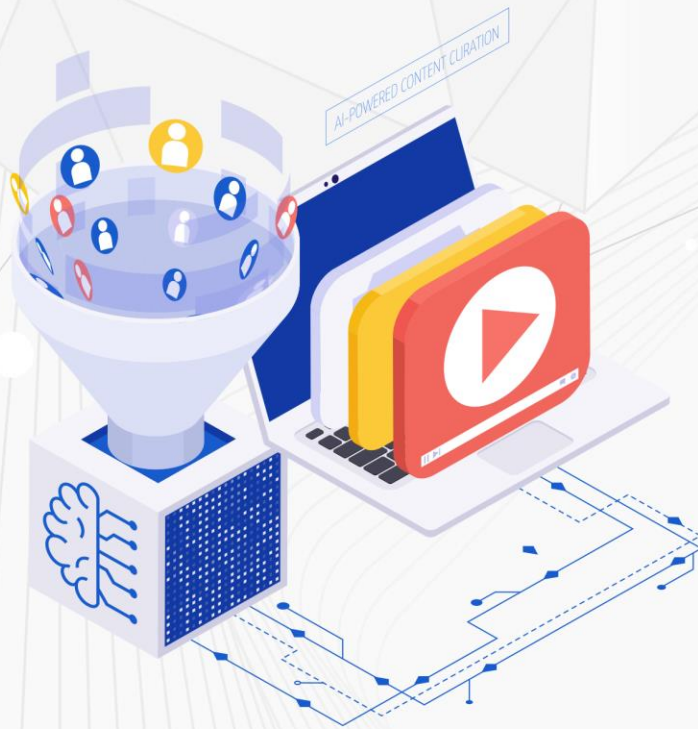
The Educational Information System's core is the Administrative Module, which offers the features and capabilities required for effective daily operations, data management, and administrative decision-making. Depending on the software package that the school selects, the features and functionalities may change.

Module for Students, Teachers, and Front Office

Modules refer to distinct software sections or components inside an Educational Information System (EIS) or School Management System that address various functional domains. The front office, teacher, and student modules are essential to the management of many parts of educational establishments.

Together, these modules comprise an all-inclusive educational information system that improves decision-making, communication, and efficiency inside the organization. Depending on the software program the educational institution uses, each module may have different features and functionalities.

EDUCATIONAL INFORMATION SYSTEM APPLICATION



By offering real-time insights and analytics, an intelligent classroom monitoring system is a technologically advanced solution that aims to improve the teaching and learning environment in classrooms. This system uses a variety of sensors and technologies to track and evaluate student participation, teacher effectiveness, and classroom activities. The purpose of an intelligent classroom monitoring system is to give parents, teachers, and administrators useful information while fostering a more dynamic and interesting learning environment.

Module for Documenting Lecture Videos

A component of a learning management system (LMS) or educational technology system that makes it easier to capture, store, and manage lecture recordings is called a module for documenting lectures. This module, which lets students view lectures at their convenience, is especially helpful for educational institutions that wish to provide blended or online learning opportunities.

Module for Monitoring Classroom Activities

By offering data on student engagement, teacher effectiveness, and general classroom dynamics in real-time or after the lesson, this module seeks to improve the teaching and learning process.

Module for Tracking Student Performance in the Classroom

This module is essential for giving parents, teachers, and administrators insightful information about the performance of both individual and group students.

INTELLIGENT CLASSROOM MONITORING SYSTEM



BERKHAN SYSTEMS
INTERNATIONAL PTE LTD - SINGAPORE

▪ Systems for all, all for systems ▪



ACCORTO TEHNO



Berkhan Systems International. PTE. LTD.

1 Coleman Street #10-06,
The Adelphi, Singapore 179803
+65 9654 9624