



BERKHAN SYSTEMS
INTERNATIONAL PTE LTD - SINGAPORE

• Systems for all, all for systems •

INTERNATIONAL PTE LTD - SINGAPORE



VARR

Integrated Asset Management

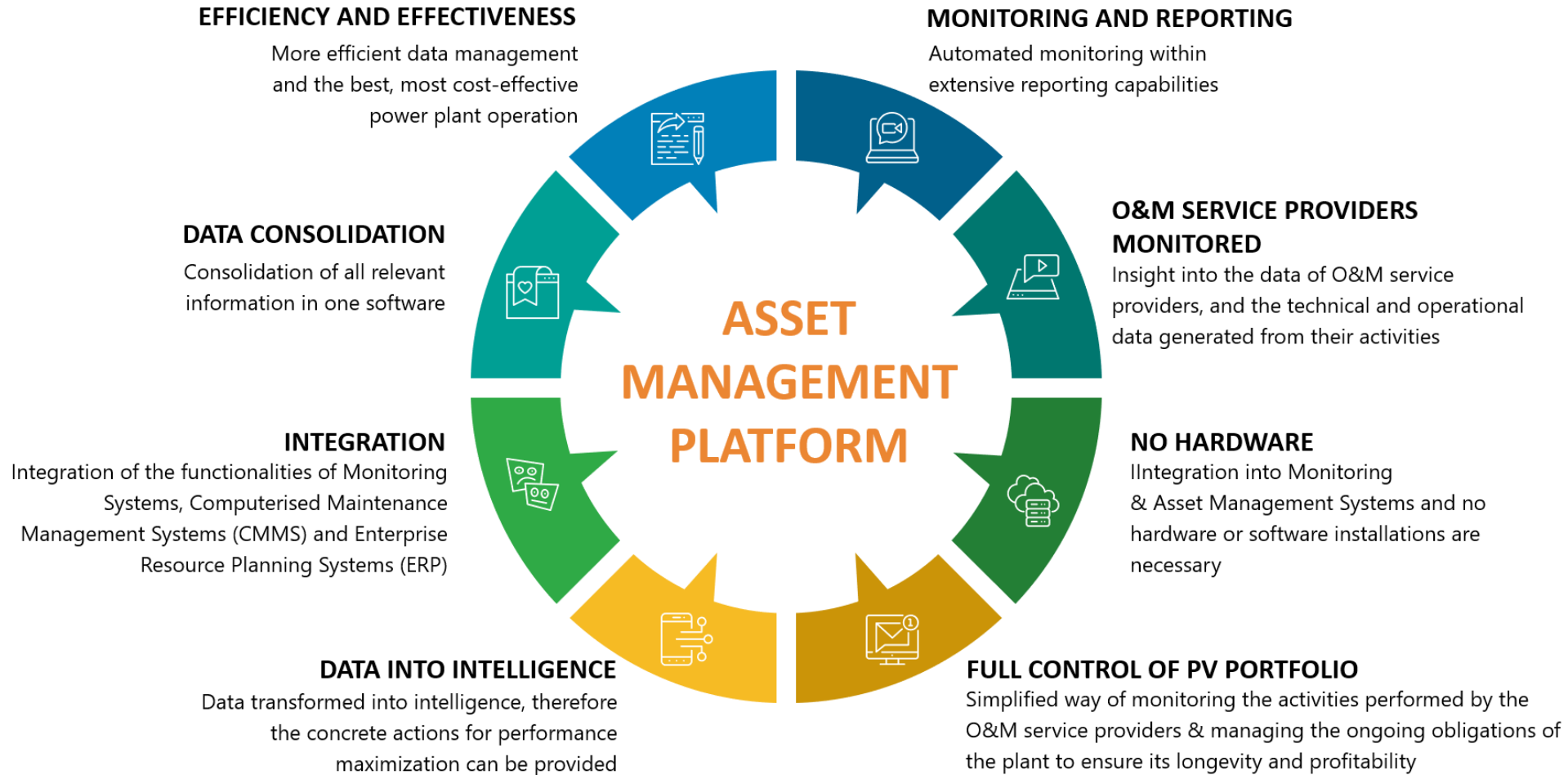


5 Major Benefits of IT Asset Management

- 01 Control over IT Inventory
- 02 Asset lifecycle management
- 03 Strategic Inventory Planning
- 04 Increased accountability
- 05 Automated asset discovery and tracking

OVERVIEW

In a nutshell, an asset management system is a process which a company uses to manage all of its assets across all of its divisions. It is possible for these assets to be tangible or intangible. An organization's assets can include personnel, buildings, software, hardware, inventory, monetary assets, and anything that is vital to the company's operation on a day-to-day basis.



Key Outcomes

- Gained consensus on an Asset Management Vision, providing Asset Management program strategic direction to meet its strategic goals, modernize working practices, and improve efficiencies.
- Defined the strategic context and priorities that affect Asset Management, and identified key stakeholders and their expectations
- Identified process improvements to be instituted in conjunction with EAM system deployment; prospectively enhancing functionality and end-user acceptance.
- Described strategic approach for ensuring its Asset Information optimally supports its Asset Management activities and decisions via the development of an Asset Information Vision and Strategy.

Asset Data Integration

- The ability to integrate asset data, both movable and immovable assets, with other systems related to the asset data management process that are relevant to the management of movable and immovable assets
- Data is managed by a database that is integrated with the system and is managed by the database





BERKHAN SYSTEMS

INTERNATIONAL PTE LTD - SINGAPORE

▪ Systems for all, all for systems ▪

BERKHAN SYSTEMS

INTERNATIONAL PTE LTD – SINGAPORE

1 Coleman Street #10-06,

The Adelphi, Singapore 179803

+65 9654 9624

www.berkhans.com